

MONTHLY MEMBERSHIP PROGRESS REPORT

District 3 NW

Results as of: 2/29/2024

GMT:

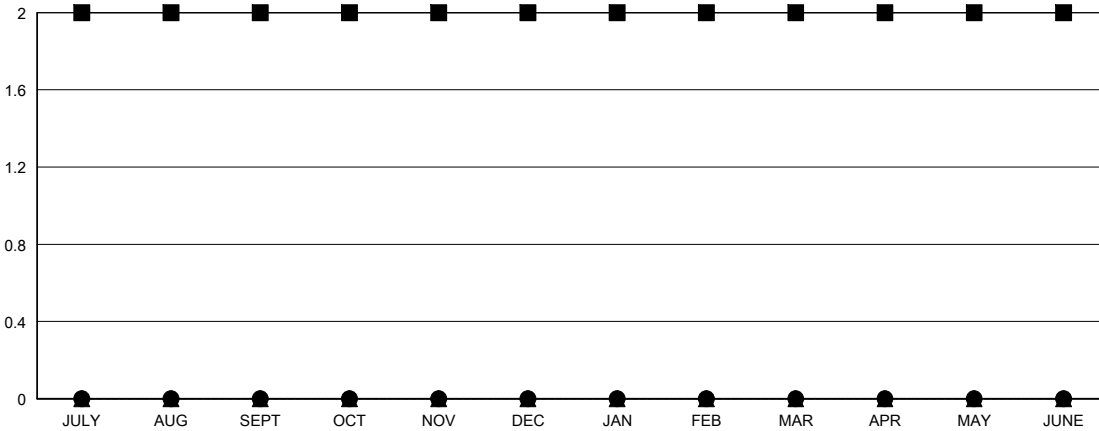
LOCATION OKLAHOMA

GMT CA

Clubs			
RESULTS FOR 2023-2024			
QUARTER	NEW CLUB GOAL	NEW CLUBS	DROPPED CLUBS
JULY/AUG/SEPT	2	0	0
OCT/NOV/DEC	0	0	1
JAN/FEB/MAR	0	0	0
APR/MAY/JUNE	0	0	0

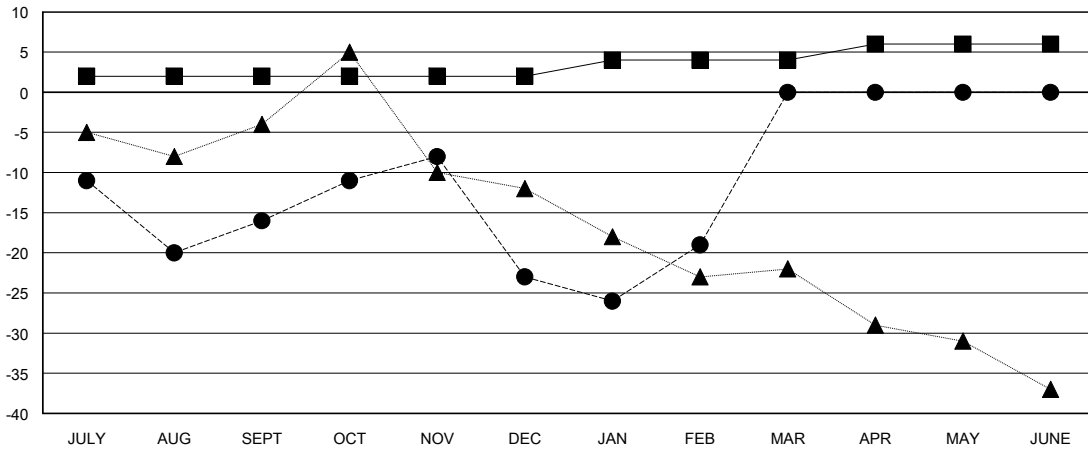
Members			
RESULTS FOR 2023-2024			
QUARTER	MEMBER GROWTH NET GOAL	MEMBER GROWTH ACTUAL	DROPPED MEMBERS ACTUAL (including transfers)
JULY/AUG/SEPT	2	26	41
OCT/NOV/DEC	0	28	34
JAN/FEB/MAR	2	24	18
APR/MAY/JUNE	2	0	0

GOALS AND ACTUAL NEW CLUBS CUMULATIVE



- - CURRENT YEAR GOALS FOR NEW CLUBS
- - CURRENT YEAR ACTUAL NEW CLUBS
- ▲ - LAST YEAR ACTUAL NEW CLUBS

GOALS AND ACTUAL MEMBERS CUMULATIVE



- - MEMBER GROWTH NET GOAL
- - MEMBER GROWTH ACTUAL
- ▲ - LAST YEAR MEMBERSHIP ACTUAL

DROPPED CLUBS: 1	24 CLUBS OF 41 ADDED 1 OR MORE NEW MEMBERS	GENDER DISTRIBUTION MALE 717 (73.24%) FEMALE 261 (26.66%)
DROPPED MEMBERS DECEASED 15 CLUB CANCELLED 4 OTHER 74 TOTAL 93	CLICK HERE FOR CUMULATIVE MEMBERSHIP DATA	TOTAL FAMILY UNIT MEMBERS 133 FAMILY MEMBERS PAYING HALF DUES 68